

### 7.5.3 iPocketView®



The iPocketView can offer the Real-Time surveillance on H.264-based by 3G or Wi-Fi under iOS for iPhone.

#### Supported Main Features

- Live View
- Full-Screen
- Multi Screen Display (4, 8, 9, 16 channel split)
- Snapshot
- PTZ Control (Pan-Tilt, Zoom, Preset configure and Move)
- Remote DVR setup on the Web Browser (Web Standard HTML for platform independence)

#### Requirements

- Auto Port Forwarding (Please refer to your DVR instruction manual for port information.)

## HOW TO DOWNLOAD ON APPSTORE

App Store > Productivity > Artnix Inc.

**iPocketView****Description**

[Description]

The iPocketView can offer the real time view based on H.264 by using 3G or Wi-Fi under iOS for iPhone Platform....

...More

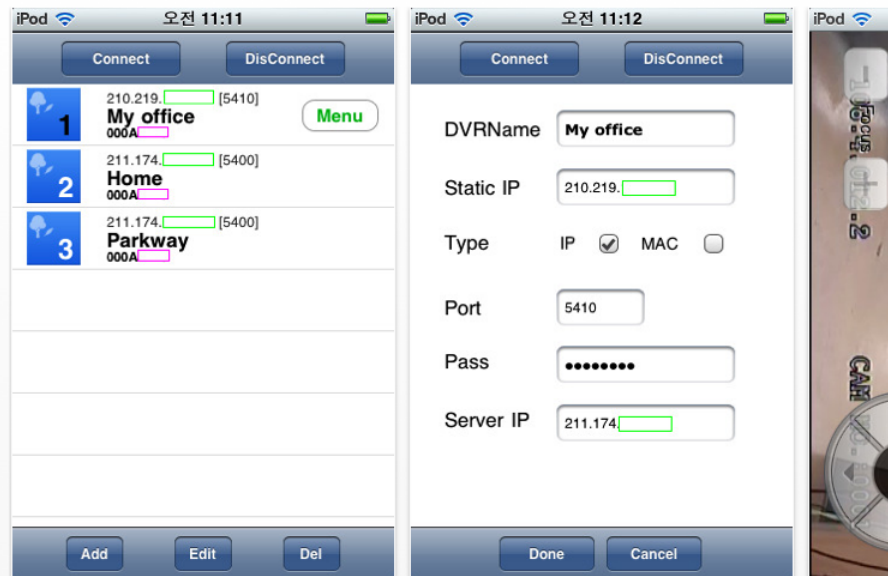
[Artnix Inc. Web Site](#) > [iPocketView Support](#) >

Free App

Category: Productivity  
Released: Aug 10, 2010  
Version: 1.0.1  
1.0.1  
9.1 MB  
Language: English  
Seller: Artnix Inc.  
© 2010 Artnix Inc.

Rated 4+

**Requirements:** Compatible with iPhone and iPod touch. Requires iOS 4.0 or later.

**iPhone Screenshots**

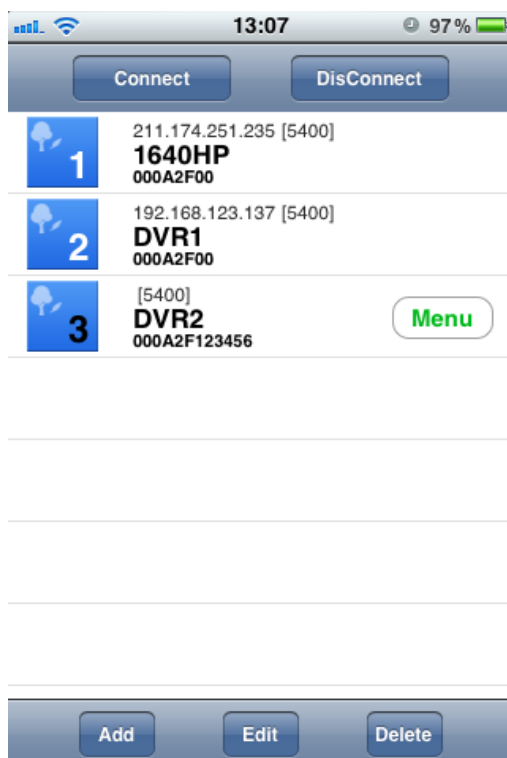
User can download iPocketView from Apple APP Store.

The APP name is "iPocketView", and suggested specific keywords to find the app are "dvr, live, DVR, iPocketView, SmartView, Viewer, Remote, artnix",



Also, user can find from APP Store on iPhone.

## HOW TO USE



First run this APP, User can see this window.

User can select the icon as like bellow (Add, Edit, Delete, Connect, DisConnect), and you can configure about your DVR List or Connection.

- **Add** : Add List
- **Edit** : Edit Item on the List
- **Delete** : Delete List

- **Connect** : Connect to the selected DVR
- **DisConnect** : DisConnect to the selected DVR



Also, user can use all features of iPocketView by scrolling up and down, right and left while touch the screen.

The left screenshot shows the 'Connect' screen with the following fields:

- DVRName: 1640HP
- Static IP: 211.174.251.235
- Type: IP ☒ MAC ☐
- Port: 5400
- Pass: .....
- Server IP: 211.174.251.155

The right screenshot shows the 'Connect' screen with the following fields:

- DVRName: DVR2
- MAC: 000A2F00
- Type: IP ☐ MAC ☒
- Port: 5400

A keyboard is visible over the right screenshot.

User has to select the connection type between IP ADDRESS and MAC ADDRESS. After then, user can access (connect) to your DVR by typing the network information in the items for each type of connection.

The screenshot shows the 'Connect' screen with a list of three DVRs:

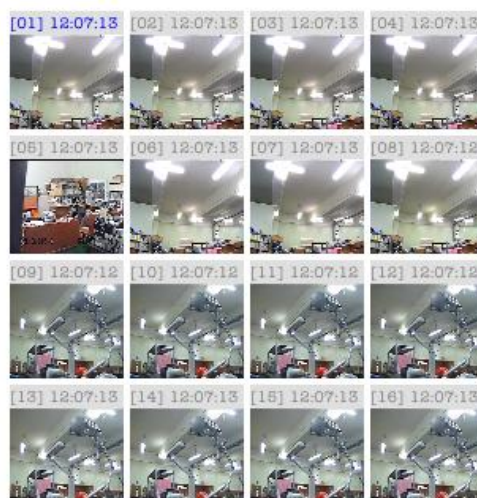
Icon	IP Address	Port	DVR Name	MAC Address
1	211.174.251.235	[5400]	1640HP	000A2F00
2	192.168.123.137	[5400]	DVR1	000A2F00
3	[5400]		DVR2	000A2F123456

A 'Menu' button is visible next to the third entry. At the bottom are 'Add', 'Edit', and 'Done' buttons.

User can select and delete the list what do you not need any more by clicking the DELETE icon.



### iPocket View



Live Image...

User can access the selected DVR on the list by clicking the Connect Icon.

If iPocketView is connected to the DVR, it will be displayed the multi split screen matched about the number of DVR's channels



### iPocket View



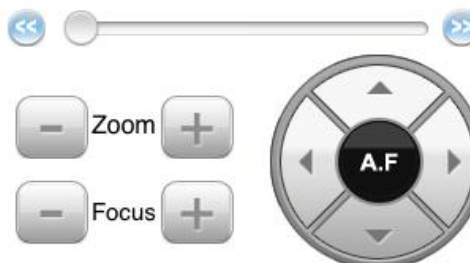
Live Image...



Preset : 1

Move

Set



User can see the single screen display by scrolling down while touch the screen about the channel what you want to see.



iPocketView supports the Landscape view mode.

