
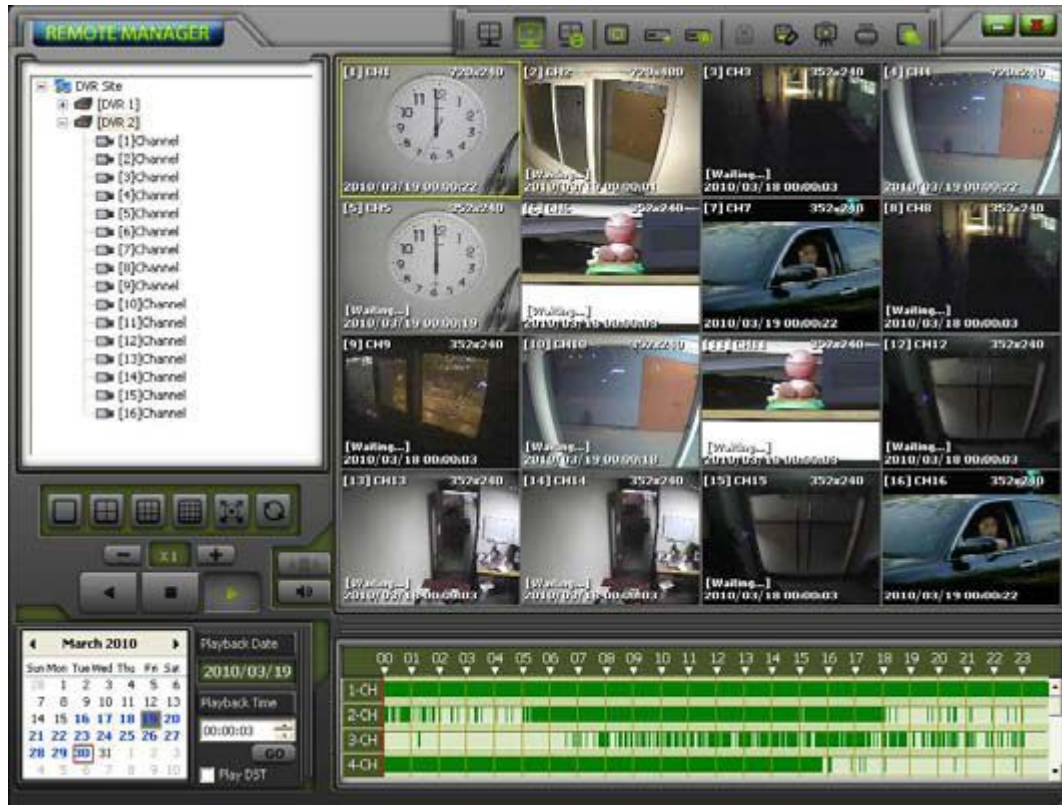
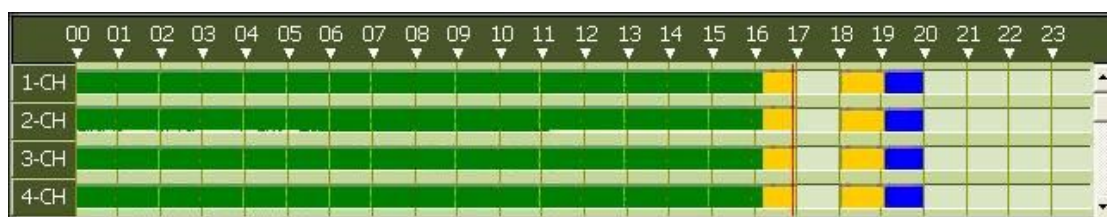


## Playback Mode (VOD Playback)

User can get playback window by a mouse click on Playback Mode icon . User can select the target site from Site Panel on the left of the main screen and drag & drop it into an empty channel screen that user wants to playback.



Select the date on calendar and input the desired playback time. User can also search the recorded image by using Intelli-Search bar.



**Note** If UEventServer.exe(of CMS) is being operated in the same PC, event may not be listed correctly.

Enable [Play DST] to play the image data overlapped during DST. When DST finishes, "one hour" overlapped data is shown in BLUE color on Intelli-Search bar.

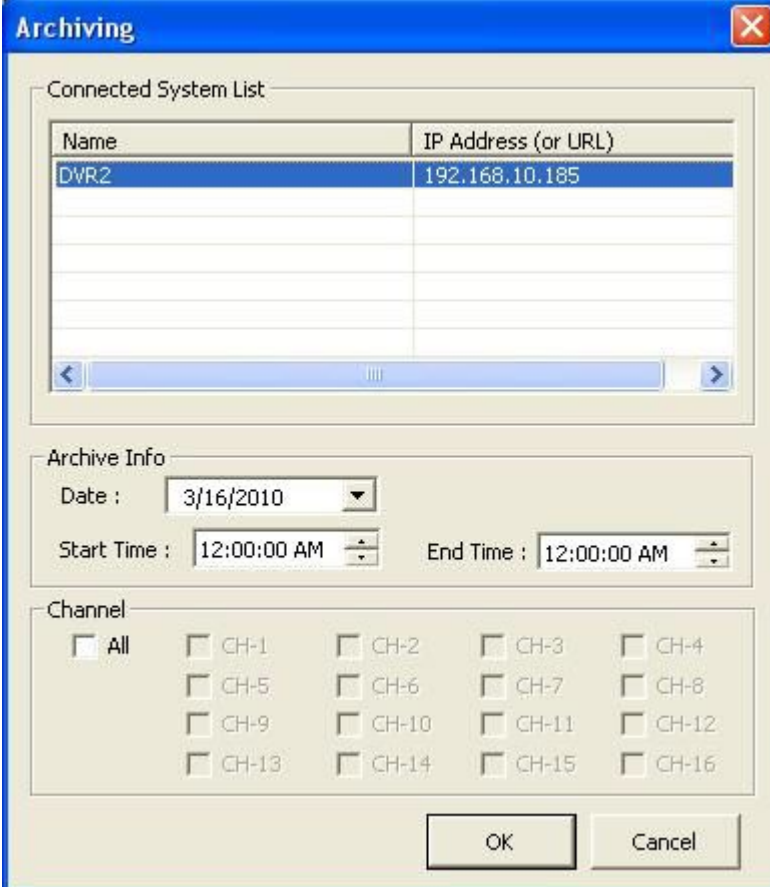
Click forward/backward icon or speed icon to adjust playback speed.



The channel number, resolution and date & time of a connected channel are shown on the channel screen.

## VOD Backup

- 1) Go to the Playback Mode and playback the desired video channel.
- 2) Select the Network Backup icon
- 3) In the connected System List, select the DVR site and then select [Playback Backup].
- 4) Select Date, Channel, Start Time, and End Time.



The image shows a software dialog box titled "Archiving" with a blue title bar and a close button (X) in the top right corner. The dialog is divided into three main sections: "Connected System List", "Archive Info", and "Channel".

**Connected System List:** A table with two columns: "Name" and "IP Address (or URL)". The first row is highlighted in blue and contains the text "DVR2" and "192.168.10.185". Below the table is a horizontal scrollbar.

**Archive Info:** This section contains three input fields: "Date" with a dropdown menu showing "3/16/2010", "Start Time" with a time spinner set to "12:00:00 AM", and "End Time" with a time spinner set to "12:00:00 AM".

**Channel:** A grid of checkboxes for selecting channels. The first checkbox is labeled "All". The following 16 checkboxes are labeled "CH-1" through "CH-16".

At the bottom of the dialog are two buttons: "OK" and "Cancel".

Name	IP Address (or URL)
DVR2	192.168.10.185

Archive Info

Date : 3/16/2010

Start Time : 12:00:00 AM      End Time : 12:00:00 AM

Channel

All     CH-1     CH-2     CH-3     CH-4  
 CH-5     CH-6     CH-7     CH-8  
 CH-9     CH-10     CH-11     CH-12  
 CH-13     CH-14     CH-15     CH-16

OK      Cancel